

320454(20)

**BE (Fourth Semester) Examination,
April-May 2019**

(New Scheme)

(Civil Branch)

CIVIL ENGINEERING DRAWING

Time Allowed : Three hours

Maximum Marks : 80

Minimum Pass Marks : 28

*Note : Question no. 1 and 4, part (a) is compulsory.
Attempt any two part from (b), (c) and (d).
Question no. 2 and 3 is compulsory. The figure
in the right-hand margin indicate marks.*

1. (a) What do you understand by "Orientation of the building"? 2

320454(20)

PTO

(b) Write short notes on :

3, 2, 2

(i) Roominess

(ii) Circulation

(iii) Elegance

(c) What are the site selection criteria and the standard norms for hospital? 7

(d) Write in brief about "Municipal Regulations and by-laws for residential buildings" 7

2. (a) What is plan represents in building drawing? Generally from which level of building it is drawn and why? 2

(b) With the given line sketch, draw to suitable scale, with essential requirements, the following views of a building :

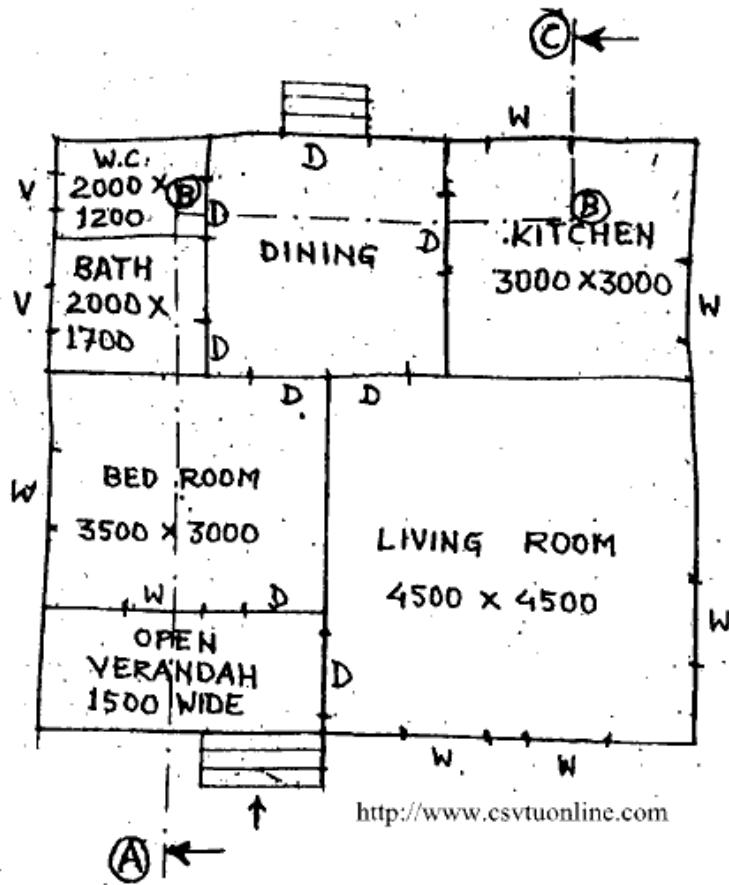
(i) Detailed plan 10

(ii) Front Elevation 8

(iii) Section on ABBC 12

All walls are 300 mm thick except partition wall of Bath and W/c, which is 100 mm thick. Provide suitable size of doors and windows for proper ventilation. Any missing data may be suitably assumed.

320454(20)



Line Plan

(Dimensions in mm)

3. (a) What is site plan? 2

(b) Draw to a scale line plan with other facilities of: (any two) 7.7

320454(20)

PTO

- (i) A single storied hostel building for 50 students.
- (ii) 10 bedded primary health centre.
- (iii) Primary school

4. (a) What is "rails" and "Stiles" in a panelled door? 2

(b) Explain with suitable figure: 7

(i) Vanishing point

(ii) Station point

(iii) Angle of vision

(c) Draw the detailed sketch of double leaf fully panelled door. (Front View) 7

(d) Draw to suitable scale the front elevation of half glazed, half panelled window. 7

http://www.csvtuonline.com

Whatsapp @ 9300930012

Your old paper & get 10/-

पुराने पेपर्स भिजे और 10 रुपये पायें,

Paytm or Google Pay से